

GENERAL INSTRUCTIONS FOR 4-H EXHIBITS

Cathy Weaver-4-H Agent Abby Sorrell- 4-H Assistant Extension Office-885-4811
Superintendents: Kathy Walker

1. 4-H entries will be accepted on **Sunday, July 9th from 2:00-4:00 pm and Monday, July 10th, from 9:00 am until 11:30 am. If you are not able to bring items within these times PLEASE contact the 4-H office and we will work with you to get your projects entered!**

YOU MUST BE IN LINE BY 11:30 AM If you need to bring items for entry the week prior to the fair please call the office and arrange. 885.4811

2. All 4-H entries will be judged on Monday, July 10th, 2017
3. Only bona fide Jessamine County 4-H members may enter exhibits in 4-H categories. **4-H Members MUST have a green enrollment form on file with the 4-H office to be considered bona fide 4-H members.**)\$th and 5th grade students in Jessamine County Schools are automatically members through their classroom)
4. Only entries listed in the fair book will be accepted. **ALL entry guidelines will be enforced.**
5. Prepare and enter exhibits according to the year in which you are enrolled where it applies. (Example: 1st year sewing, 2nd year foods) Some exhibits are not by year of club work, but rather by age groupings (example: Junior Division, age 9-13, Senior Division, age 14-19)
6. **Entries must be removed between 10:00 am and 12:00 pm on Saturday July 11, 2015. If removes before prize money will be forfeited.**
7. Fifteen Hundred Dollars (\$1,500) has been allotted 4-H Exhibits.
8. The Danish system of judging will be used with top entry in each class designated. Awards will be based on a pre-set ratio according to difficulty of project.
9. Items whose entry numbers begin with **4-H DO NOT** go to the state fair.
10. Articles exhibited in previous county fairs **CANNOT** be entered this year.
11. No 4-H exhibitor will be allowed in the exhibit hall during judging of 4-H exhibits.
12. **THE DECISION OF THE JUDGES IS FINAL!**
13. Exhibits must have been produced in conjunction with an approved project.
14. Departments with a (+) sign beside the name will receive purple ribbons.

DIVISION 6011.4

EDUCATIONAL 4-H DOG PROJECT POSTERS

1. Educational posters **MUST** relate to dogs **and be completed since the last State Fair**. Poster must be judged at the county level before entry at the State Fair. **Only one entry per class per county is allowed (county winner must have received at least a blue ribbon at the county level before entered at the state fair level).**
2. Posters should encourage the participant's imagination in developing a slogan/theme that promotes a breed or project or educates the viewer about a dog project related activity. Examples of topics include but are not limited to: showing/grooming/caring for your dog, dog health, nutrition, and breed characteristics. Posters should be simple and focus on one message to tell the story of your dog poster theme. **Resource information should be attached to the back of the poster** (resource may be in envelop with youth name and county, class listed on envelop).
3. Participants may use a variety of media, however no 3-dimensional posters will be allowed.
4. Posters must be no smaller than 20" x 30" and no larger than 24"x 30." Posters must be made using one of the following, matt board, or foam core board. **No poster board is allowed.** Posters submitted on poster board will be disqualified at entry.
5. Copyrighted characters such as Snoopy, Charlie Brown, or other cartoon characters cannot be used.
6. The back of the poster **MUST** include a listing of the resources of the information on the poster or the poster will be marked down in judging. Poster content should allow for display of the electronic label in the bottom right corner of poster, approximate size of a 3x5 card. **ON the back of the poster: Write youth name, county, class.**
7. Posters will be judged on how well they present information and on their general appearance.

543 Junior (age 9-13)
544 Senior (age 14-19)

LOT 6015- 4-H HORTICULTURE EXHIBITS (+)

Securely attach the 4-H Identification Card (4LO-11SO) to the exhibit in a location which can be seen by the public once the item is placed or displayed. Attach neatly with tape; punch a hole in the corner of the ID tag and attach with a string or rubber band; or attach card to a floral pick and insert in the container.

1. **YOU MUST FURNISH YOUR PAPER PLATED FOR ALL VEGETABLE ENTRIES.**
2. **HORTICULTURE PROJECTS HAVING PLANTS IN CONTAINERS MUST USE A POTTING SOIL MIXTURE. SOIL FROM THE GARDEN OR YARD WILL NOT BE ACCEPTED AND YOUR PROJECT WILL BE DISQUALIFIED.**

- 561 Environmental Awareness (Such as but not limited to:) A one page description of project must accompany entry item (type or printed neatly) to be eligible for entry.
- A. Tree planting on city property, roadways, parks, etc.
 - B. Home landscaping
 - C. Composting
- 562 Production and Marketing (such as but not limited to:)
- A. Vegetable garden planted for home and/or market use.
 - B. The planting, production, or management of fruit plantings.
 - C. The planting, production, or management of trees, shrubs, greenhouse crops or garden perennials.
- 563 Experimental Horticulture (such as, but not limited to:) A one page description of project must accompany entry item (type or printed neatly) to be eligible for entry.
- A. "Science Fair" type of exhibit involving experimental work with plants
 - B. Comparison of different varieties of vegetables or annual flowers
 - C. Comparison of mulching or other cultural practices
- 564 Horticultural Project Exhibits (such as, but not limited to:) A one page description of project must accompany entry item (type or printed neatly) to be eligible for entry.
- A. How to propagate plants
 - B. How to force spring bulbs
 - C. How to start seeds
 - D. How to graft cacti
 - E. How to dry herbs

Plant Display: Youth should NOT use garden soil in containers. Use well-drained, disease-free potting soil for all containers.

- 565 Terrariums
566 Dish gardens (desert or tropical)
567 Vegetable container gardens (grown in container - not dug out of the garden)
568 Annual container gardens -(non vegetable)
569 House plants
570 Hanging baskets
571 Herb Container Garden
572 Window Box Display
573 Upcycle Container Garden (Previously used container recycled, example, wood pallet garden)

Garden and/or Orchard Displays

- 574 The exhibitor may exhibit as many different fruits and/or vegetables from their garden as desired. Any size or type (minimum of five types) of produce may be displayed in the 2'x3' area provided for each exhibit. The exhibit must be in a display container (box or basket) which can be easily moved. Vegetables will not be returned to exhibitor. They will be judged as follows:

Quality of Produce	40%
Attractiveness of Container	30%

Uniformity and true-to-type ness	10%
Number of different types	15%
Labeling	5%

4-H'ers may also exhibit plates of vegetables. A white paper plate for vegetables must be supplied by the exhibitor. These vegetables will not be returned to the exhibitor. Classes of vegetables will be limited to:

- 575 Tomato (5 per plate) Must be ripe (red or yellow color only) cherry type
- 576 Tomato (5 per plate) beef steak
- 577 Tomato (5 per plate) heirloom
- 578 Peppers, hot (5 per plate)
- 579 Peppers – bell (5 per plate)
- 580 Peppers – sweet (5 per plate)
- 581 Cucumbers, slicing (5 per plate)
- 582 Cucumbers, pickling (5 per plate)
- 583 Beans, snap or lima (12 per plate)
- 584 Corn, sweet (in the husk with silks) (5 ears per plate)
- 585 Cantaloupe (1 whole), **halved**

The largest vegetable may not be the highest quality, nevertheless, it is unique. The largest entry in each of the following classes will receive a class champion ribbon.

- 586 Largest Tomato (by weight) Must be ripe (red or yellow color only)
- 588 Largest Pumpkin (by weight)
- 589 Largest Watermelon (by weight)

- 4H-1** Green tomato (5 per plate)
- 4H-2** Cabbage (1 head)
- 4H-3** Onions (3 per plate)
- 4H -4** Potatoes (3 per plate)
- 4H -5** Squash (3 per plate)
- 4H- 6** Beets (3 per plate)
- 4H-7** Carrots (3 per plate)
- 4H-8** Radishes (5 per plate)
- 4H-9** Okra (5 per plate)
- 4H-10** Apples (3 per plate)
- 4H-11** Any fruit not listed
- 4H- 12** Any vegetable not listed

They will be judged as follows:

Condition	25%
Quality	20%
Uniformity	20%
True-To Type	20%
Size	15%

Consult Exhibiting and Judging Vegetables (4BC-08PO) to learn the characteristics of these criteria.

4-H FLOWERS

- 4H-13** Roses
- 4H-14** Gladiolus
- 4H-15-**Dahlia
- 4H-16** Marigolds
- 4H-17** Zinnias
- 4H-18** Petunia
- 4H-19** Day Lily
- 4H-20** Any flower not listed

(The above should be a single stem exhibited in a clear bottle.)

LOT 2101 - 4-H TOBACCO EXHIBIT (+)

Specifications for exhibits:

- A. Exhibit of green tobacco consists of four stalks per stick.
- B. All entries in the green classes should be wilted for a better presentation, but still be in a green stage.
- C. All growing tobacco plants should be potted within a water-proof plastic bag and placed in an attractive container.
- D. Green tobacco will be judged on uniformity, general appearance and quality.
- E. Exhibit of stripped Burley tobacco shall consist of two hands, and each shall be made up of twenty leaves or more.

Burley Division – Stripped

All 4-H Burley should be entered as Division (Lot) 2101.

Class No.

6	Flying (L or F)	9	Red Leaf (Must grade R or FR under government grade)
7	Lug (L or F)		
8	Bright Leaf	10	Tip (Leaf 16 inches or under)

Burley - Best Crop

Class No.

18 Best Crop, 4-H, 4 grades

4-H Class Green Tobacco (by sticks):

Class No.

48 Burley

An engraved plaque will be awarded to the top 4-H exhibit in class 48.

Class No.

51 Best potted growing plant of Burley Tobacco

All potted plants will become the property of the Kentucky State Fair and after judging will be used as decorations throughout the Fair for promotion of the Tobacco Department.

LOT 6018 - 4-H CROPS PROJECT

Hay should be 1 bale from current year, neatly tied unless specified otherwise.\

- 600 **Alfalfa hay**, ½ bale (no full bales accepted) from the current year's project crop, neatly tied and labeled.
- 601 **Red clover hay**, ½ bale (no full bales accepted) from the current year's project crop, neatly tied and labeled.

- 602 **Timothy Hay**, ½ bale from this current year's project crop, neatly tied and labeled. **Place hay in a double strength plastic bag.**
- 603 **Other Grass Hay**, ½ bale from the current year's project crop, neatly tied and labeled. **Place hay in a double strength plastic bag.**
- 604 **Mixed Hay**, ½ bale from the current year's project crop, neatly tied and labeled.
- 605 **Yellow-ear Corn**, from the previous year's crop, 8 ears shucked, and labeled with variety and yield.
- 606 **Yellow-ear corn**, from the current year's crop, 8 ears shucked, and labeled with variety and yield.
- 607 **Yellow-shelled corn**, from the previous year's crop, 0.5 gallon in a container, and labeled to show variety and yield.
- 608 **White-ear corn**, from the previous year's crop, 8 ears shucked, and labeled with variety and yield.
- 609 **White-ear corn**, from the current year's crop, 8 ears shucked, and labeled with variety and yield.
- 610 **White-shelled corn**, from the previous year's crop, 0.5 gallon in a container, and labeled to show variety and yield.
- 611 **White Popcorn-ear**, from the previous year's crop, 8 ears shucked, and labeled with variety and yield.
- 612 **Red Popcorn-ear**, from the previous year's crop, 8 ears shucked, and labeled with variety and yield.
- 613 **Yellow Popcorn-ear**, from the previous year's crop, 8 ears shucked, and labeled with variety and yield.
- 614 **Soybeans** from the current year's crop, three stalks tied together below leaves, with roots intact, but free of soil, and labeled to show variety.
- 615 **Soybeans** from the previous year's crop. 1-gallon zip lock bag, and labeled to show variety and yield.

- 617 **Grain Sorghum** from the current year's crop, three stalks tied together below leaves, with roots in tact, but free of soil, and labeled to show variety.
- 618 **Grain Sorghum** from the previous year's crop, 1 gallon zip lock bag, and labeled to show variety and yield.
- 619 **Sweet sorghum** from the current year's crop, three stalks tied together below leaves, with roots intact, but free of soil, and labeled to show variety.
- 620 **Wheat** from the current year's crop, 0.5 gallon in a container, and labeled to show variety and yield.
- 621 **Barley** from the current year's crop, 0.5 gallon in a container, and labeled to show variety and yield.

LOT 6021 - 4-H ELECTRIC (+)

MAGIC OF ELECTRICITY (4HCCS BU-06848) (All exhibits must be DC powered).

- 645 Battery powered series and parallel circuits (Circuits must include both series and parallel, a simple switch and can be no more than 9 volts).
- 646 Homemade Galvanometer (Must be able to detect the presence of an electrical current)
- 647 Electromagnetic Circuits (Must be a working electromagnet with a simple switch and can be no more than 9 volts).
- 648 Simple homemade DC motor (Rotor must turn under it's own power).

INVESTIGATING ELECTRICITY (4HCCS BU-06849) (all exhibits must be DC powered)

- 649 Battery powered series or parallel circuit (Circuit may be either series or parallel, must contain either a momentary and/or three way switch, a circuit diagram with explanation and can be no more than 9 volts).
- 650 Original design soldered circuit project (Circuit must contain an on/off switch, a motion or tilt activated switch, a light and sound producing device and must be powered by 9 volts. All connections in the circuit must soldered and a circuit diagram with explanation must be included).

WIRED FOR POWER (4HCCS BU-06850) (all exhibits must be AC powered and be able to be safely connected and disconnected from a standard 120 volt duplex outlet).

- 651 Display of wire sizes and types with description and example of usage (display must contain at least 12 different examples)
- 652 Simple household or farm use circuit (Circuit must contain one single pole switch controlling one electrical load device. Circuit should be mounted on a sturdy mounting surface and free standing. Wiring should be done with Romex NM-B 12 gauge wire and clamped or stapled appropriately. A circuit diagram with explanation must be included)
- 653 Complex household or farm use circuit (Circuit must contain at least two three-way switches, and may also contain a four-way switch, controlling one electrical load device. The circuit must also contain a working duplex electrical outlet. Circuit should be mounted on a sturdy mounting surface and free standing. Wiring should be done with Romex NM-B 12 gauge wire and clamped or stapled appropriately. A circuit diagram with explanation must be included)
- 654 Table, desk, vanity or floor lamp (any purpose – original design only (Pop Can Lamp kits will be disqualified))

ENTERING ELECTRONICS (4HCCS BU-06851) (exhibits may be either DC or AC powered. AC powered exhibits must be able to be safely connected and disconnected from a standard 120 volt duplex outlet).

- 655 Basic electronic circuits without solid-state components (from project book).
- 656 Basic electronic circuits with solid-state components (from kit).
- 657 Basic electronic circuits with solid-state components (original circuit design, must include circuit diagram and explanation).

GREEN ENERGY

- 658 Wind or solar powered energy project (from kit).
- 659 Wind or solar powered energy project (original design).

LOT 6025 - 4-H WOOD SCIENCE (+)

- 674 Level 1, **made from a kit.** Simple items which have pre-cut and pre-drilled parts and youth demonstrate knowledge of assembly, selection and use of fasteners (nails, screws and/or glue), sanding techniques, and appropriate finishes. (Examples could include but not limited to: small bird house, non-hopper bird feeder, etc.) Item must demonstrate skill with fasteners, sanding and appropriate finish (no puzzles).
- 675 Level 1, **NOT from a kit.** Simple constructed wood item showing knowledge of hand tools, wood selection, cutting, drilling, usage of fasteners (nails, screws and/or glue), sanding techniques, and appropriate finishes. (Examples could include but not limited to: napkin holder, letter holder, simple picture frame, wire wiggly, towel holder, serving tray, jewelry box, small flag holder, 4-H book ends, airplane, hurricane lamp, trivet (pot holder), etc.)
- 676 Level 2, **made from a kit.** More elaborate items which require proper cutting, drilling and youth demonstrate knowledge of selection and skill in use of fasteners (nails, screws and/or glue), sanding techniques, and appropriate finishes. (Examples could include but not limited to: jewelry box, tool tray, large bird house, pine wood cars, etc.) Item must demonstrate skill with fasteners, sanding and appropriate finish (no puzzles).
- 677 Level 2, **NOT from a kit.** More elaborate items that demonstrate mastered skills with hand tools, basic knowledge of power hand tools, fastening options, appropriate surface preparations, and finish applications. (Examples could include but not limited to: puzzle, foot stool, revolving tie rack, 4-H key holder, cutting board, book rack, serving dish shelf, sawhorse, hopper type bird feeder, etc.)
- 678 Level 3, **NOT from a kit.** Items showing a more advanced knowledge of power tools, expertise in cutting, fitting, surface preparation, attention to fastening details, and finish application, (Examples could include but not limited to: a multi-purpose box, corner shelf, book shelf or laminated wood projects, garden bench, planting box, nail and tool box, shop tool rack & shelf, etc.) Original designs are welcomed. This exhibit is to be made

up of two parts: 1) the **item** and 2) a **folder containing photographic documentation** of the steps taken in order to complete this exhibit.

- 679** Level 4, **NO kits**. Exhibits with a "furniture" quality finish, showing an understanding of all woodworking techniques learned in previous levels. Items must show a mastery of joint construction and use of special woods, and finishes. (Examples could include but not limited to: checker boardroom divider, coffee table, end table, chest of drawers, gun rack or cabinet, etc.) Original designs are welcomed. This exhibit is to be made up of two parts: 1) the **item** and 2) a **folder containing photographic documentation** of the steps taken in order to complete this exhibit.
- 680** Level 4, **NO kits**. Exhibits do not require a fine finish (painted finish allowable) because of practical use. Items demonstrate knowledge of all woodworking techniques learned in previous levels. Items must show a mastery of cutting, drilling, joint construction, use of special woods, and appropriate finishes. (Examples could include but not limited to: porch swing, chaise lounge, picnic table, lawn chair, large planters, etc.) This exhibit is to be made up of two parts: 1) the **item** and 2) a **folder containing photographic documentation** of the steps taken in order to complete this exhibit.

LOT 6026 – ENTOMOLOGY (+)

See General Rules applying to all 4-H exhibitors and 4-H exhibits other than livestock listed previously in this catalog.

2. Each county may have 1 entry per class. An exhibitor may enter only one class in Entomology and one class in Honey. no more than two entries in Honey (one extracted, one chunk).

3. Specifications for pinned-insect exhibits 687A, 688, 689, and 691 (see below for insect photography exhibit, 687B):

- a. 9" x 13" folding cardboard insect-collection boxes available through UK College of Agriculture, Department of Entomology, should be used. Homemade or purchased wooden exhibit boxes may be used instead. They must be approximately 18" x 24" and not more than 3 1/2" thick with Plexiglas or glass covers and cellotex pinning bottoms (or plastazote or polyethylene pinning bottoms available from entomology supply stores such as Bioquip.com). Boxes must be easily opened (for instance; if a screw is used to secure Plexiglas tops, use a thumbscrew fastener instead of a fastener that requires a tool).
- b. Specimens are to be arranged so the box can be exhibited horizontally. 4-H'ers may attach wires to the back of wooden boxes to help make them easier to display.
- c. Identification labels available from your County Extension Office must be used, or custom labels may be printed if they conform exactly to the font, font size, and font color of the official labels. Labels should be printed onto white cardstock. The exhibit identification card should be placed on the front of the box (each box). Instructions for pinning and labeling are included in your project literature.
- d. One half of the specimens may be from the previous year's collection or from anywhere in the United States; one half or more must be Kentucky insects collected since the last Kentucky State Fair.
- e. For the first through fifth year projects, a display collection catalog must be in an envelope attached to the back of the display box. Envelopes should be attached to permit their being opened easily to remove catalogue from them without moving the exhibit.
- f. Most specimens in the display cases should be pinned, and the use of vials is discouraged. If vials are used, they may account for no more than 2% of a collection. Vials must be securely wired or pinned to the pinning bottoms.
- g. The inclusion of non-insect specimens (spiders, e.g.) is encouraged, but because this is primarily an insect collection, and because non-insects do not preserve well on insect pins, points will be deducted if there are more than one specimen from each non-insect class.

Exhibits will be disqualified if they do not:

- a. Use insect pins for pinning insects.
- b. Use the 4-H Entomology identification labels.
- c. Use the standard 18" x 24" x 3 1/2" display box or box acquired through the Dept. of Entomology. (Boxes from the Entomology Dept. should have a plastic film cover such as Saran Wrap to protect insects inside.)
- d. Fulfill the requirements of the particular exhibit under which it is entered.
- e. Have the insects arranged so the box can be exhibited horizontally.
- f. Have the display collection catalogue in an envelope attached to the back of the display box through fifth year projects. (available from Extension Office)

4H- 21 Exhibit in a cigar box with insects mounted on insect pins. They must follow the same guidelines as 687A. (This exhibit cannot go to the state fair.)

- 687A** First year project (Up to three 9” x 13” official cardboard boxes, or up to two 18” x 24” wooden boxes, with minimum of 25 insects, maximum 50 insects, from at least four orders. Identification beyond order not necessary. All specimens must have date and locality label.)
- 687 B** First year project (minimum of 25 insect photographs, maximum 50 photographs, from at least four orders. Identification beyond order not necessary. All photographs must have notation field.)
Specifications for insect photography exhibits:
- Images will be submitted on a USB memory device (such as a “thumb drive”) with no other data except for the images and folders. The USB device must be identified externally with a tag or label, showing “4-Her’s last name-County-Lot Number-Class Number-Entry Number.” The single root folder will be labeled with the same information. Images will be contained inside this folder. Example folder name: Doe-Fayette-6026-687a-24531
 - Each image will be .jpg format, 1920X1080 pixels. Vertical or horizontal black bars may be present to allow for cropped images.
 - Each image will have a filename that matches the following: “lastname-county-#.jpg,” where “#” indicates the number of the image inside the folder. Example filename: Doe-Fayette-1.jpg
 - Each image will include a 200X200 pixel, white notation box with important information about the photo. This notation field may be placed anywhere inside the image, including inside black bars (if present). Fonts may vary based on the 4-Her’s software, but we recommend Ariel, 10pt, black, non-bold. The notation field will include the following information, with one space between each line:

 [4-Her’s Name, County, Lot Number, Class Number, Entry Number]
 [Date of original photograph]/[Location of original photograph. Location may be in the form of a street/city/zip code address or GPS coordinates.]
 [Brand and type of camera or camera phone]
 [Settings, including type of lens, relevant camera settings, and “flash” or “no flash”]
 [Insect Order – Common Name]
- Entomology exhibits are judged on the following categories: Orders, Species, Common Names, Labels, Quality of Photograph. Check with county 4-H Agent for point distribution on score sheet.
 - Digital insect collections will be penalized if they:
 - Consist of images that were created by someone other than the 4-Her
 - Are not submitted and labeled according to guidelines
 - No extra credit will be given for photographs submitted beyond the numbers listed in the current project books.
- 688** Second year project (Up to three 9” x 13” official cardboard boxes, or up to two 18” x 24” wooden boxes, with minimum of eight orders and not less than 50 insects, nor more than 100 insects.) Half of the insects should be identified with a common name.
- 689** Third year project (Three 9” x 13” official cardboard boxes, or two 18” x 24” wooden boxes, with a minimum of 10 orders and 100 insects, a maximum of 150 insects.)
- 690** Fourth year project (Three 9” x 13” official cardboard boxes, or two 18” x 24” wooden boxes, with minimum of 12 orders and 150 insects, no maximum) An addition cardboard or wooden box with an example of insect damage, the stage of the insect causing the damage and any other stage of the insect that helps identify the problem. Include information in the display that tells how the insect is controlled. Life cycle of two insects may be displayed if desired.
- 691** Fifth year project (may be repeated for successive years of eligibility but must be a different exhibit. No exhibit that has been judged in any previous State Fair may be entered.) Any type of display that pertains to experiences beyond those of previous projects. Special collections of native and/or exotic butterflies, beetles to some other insect order; a study in depth of one insect or small group of insects: a display of insect camouflage: a display of plastic embedded insects: a collection of insect larvae and nymphs are examples. Charts, photographs, models or any other visual aids may be used. 4-H'ers are encouraged to write a short (1 or 2 paragraphs) statement developing the theme of their fifth year display.

HONEY

- 692** Two one pound containers of white extracted honey
- 693** Two one pound containers of light amber extracted honey
- 694** Two one pound containers of amber extracted honey
- 695** Two one pound containers of dark amber extracted honey
- 696** Two wide-mouth quart jars of chunk honey, any color.

LOT 6027 - 4-H FORESTRY (+)

FIRST YEAR

703 Leaf Collections

Collection of 10 leaves representing 10 forest trees found in Kentucky. Mounting instructions in the forestry book, "4-H Forestry Project Unit I - Introducing Yourself to Trees" (4DF-01PA or most recent version) Activity #1 are to be followed.

704 Leaf Print Collection

Collect and print 10 leaves representing 10 forest trees found in Kentucky. Instructions in the forestry book, "4-H Forestry Project Unit I - Introducing Yourself to Trees" (4DF-01PA or most recent version) Activity #3 are to be followed.

SECOND YEAR

705 Leaf Collection-2nd year

Collection of 20 leaves representing 20 forest trees and *different from ones done by same exhibitor in first year project* found in Kentucky. Mounting instructions in the forestry book, "4-H Forestry Project Unit I - Introducing Yourself to Trees" (4DF-01PA or most recent version) Activity #1 are to be followed.

706 Educational Exhibit

Develop a creative educational exhibit on some phase of forestry. The exhibit may utilize any visual technique. The total exhibit is not to exceed dimensions of 2' x 2', or four (4) square feet.

THIRD YEAR AND OVER

707 Educational Exhibit

Develop a creative educational exhibit on some phase of forestry. The exhibit may utilize any visual technique. The total is not to exceed dimensions of 3'x3', or nine (9) square feet.

708 Stem, Leaf, Fruit display

Collect and mount 5 stems, leaves and fruit representing 5 forest trees found in Kentucky. **Follow closely the instructions in the forestry book**, "4-H Forestry Project Unit I - Introducing Yourself to Trees" (4DF-01PA or most recent version) Activity #2 is to be followed, including the 2' x 3' *exact* size.

LOT 6028 – GEOLOGY (+)

- 4LO-11S0 Identification Card should be securely attached to the lower right corner of the front of the box.
- Display boxes must be no less than 16 inches nor more than 20" inches vertically and no less than 22" nor more than 24" inches horizontally. All boxes must have Plexiglas cover that can be easily removed for judging.
- EACH exhibit must be secured with a lock. Attach a key to the box with your name and county firmly attached to key. Key will be returned to 4-H agent. Keep another key in case State Fair key is misplaced. Hinges and locks: Make flush or mount on sides or top of boxes so boxes will sit level. Fabric: If fabric is used, use fabric glue to adhere entire piece of fabric to box. Suggested fabrics are felt or velveteen.
- Rocks, Minerals, and Fossils: Should be firmly attached to the box, and should be numbered to correspond with the number on the Geology Identification Labels (see rule 12 for labels).
- Boxes will be displayed on their side, not flat. Therefore, larger specimens must be attached near the lower part of the box.
- Rock, Mineral, and Fossil identification labels and instructions are available in a Word or PDF format at the Kentucky Geological Survey website (<http://www.uky.edu/KGS/education/4H.htm>).
- Exhibits will be disqualified for class champion if:
 - a. Box does not fit in the size stated in rule 5.
 - b. Box contains too few or too many specimens.
 - c. Box does not have a Plexiglas cover that can be opened.
 - d. Labels not correctly filled out.
 - e. Specimen is mounted jewelry.
 - f. Specimen is mounted and polished.
 - g. Specimen and label are not numbered.
 - h. Specimens are not arranged in numerical order.
 - i. Duplicate specimens are used to reach minimum number. However, varieties of the same rock or mineral are acceptable if the specimen is identified by a different name (i.e., quartz,

smoky quartz, amethyst, agate, chert, flint or calcite, Iceland spar, aragonite, travertine). Also acceptable if the duplicate specimen has an adjective in front of the specimen (i.e., calcite, red calcite, or limestone, fossiliferous limestone, oolitic limestone). If each entry in that class has duplicate named specimens, then each entry may qualify for class champion, but will not be eligible for grand champion.

- The following scorecard will be used to judge Geology exhibits:
 - a. Correct identification and labeling: 5 points for each specimen. (Collections will be judged more favorably that have different types of specimens, rather than many different varieties of the same rock, mineral, or fossil; i.e., gray limestone, light gray limestone, dark gray limestone, or red calcite, blue calcite, green calcite).
 - b. Cards/specimen: 1 point each that each specimen has the label completely filled out, along with specimen number,
 - c. Found on site: Since this is an exercise in becoming familiar with rocks, minerals, and fossils, an extra 1 point will be given for specimens that are found rather than purchased or given as gifts. (Be sure to ask permission if you have to enter private property. The Internet is a good place to search for rock clubs and geological surveys of your and other states for information on collecting localities.
 - d. Neatness, arrangements, background: 20 points for total exhibit.
- Class champion will be selected in each class, and a grand champion and reserve grand champion will be selected from class champions.
- 4-H'ers entering the fifth year and higher cannot enter the same exhibit that has been judged in any previous State Fair.

Classes are:

* For each of the classes, specimens may consist of rocks, minerals, and/or fossils. There is a separate label for rocks, minerals, and/or fossils (three different labels) at the Kentucky Geological Survey website (<http://www.uky.edu/KGS/education/4H.htm>).

- 715 First year geology: Consisting of 15 different specimens.
- 716 Second year geology: Consisting of 25 different specimens (up to 12 may be from previous project year; no more than two boxes).
- 717 Third year geology: Consisting of 35 different specimens (up to 17 may be from previous project year; no more than two boxes).
- 718 Fourth year geology: Consisting of 50 different specimens (up to 25 may be from previous project year; no more than two boxes).
- 719 Special collection for fifth year or higher members: Creative, advanced display of member's choosing that depicts a geological process, theme, story, or manufacturing process. Posters, notebooks, and written narratives may be included.

LOT 6029 – 4-H ARTS and Crafts (+)

1. See General Rules applying to all 4-H exhibitors and general rules applying to 4-H exhibits listed previously in this catalog.
2. All classes are from Portfolio Pathways (Section A) and Sketchbook Crossroads (Section B) 4-H Core Curriculum except for Trends and Heritage Crafts.
3. Junior: Any member age 9-13. Senior: Any member age 14-19.
4. Seniors must submit an artist statement label card. This card can be found on the state fair agent resource page. Information on writing an artist statement may be found here.

<http://www.dl.ket.org/humanities/connections/class/more/statement.htm>

5. A county is limited to one entry per class. Each Exhibitor may enter only two (2) classes per sections A & B per year, and one (1) per section C per year.
6. All items must have been made since the last State Fair.
7. Tags (4LO-11SO) must be attached to the lower right front corner of paintings, drawings, etc. For other exhibits, neatly secure the ID card where it can be seen by the public with tape, or punch a hole in the corner of the tag and attach with string or rubber band. For items with more than one piece, a description on the back of the ID card is suggested with number of pieces, color, etc. In addition, label each item in an inconspicuous location; include a minimum of name and county (clothing label 4LO-12SO may be utilized).
8. Exhibits will be disqualified if:
 - a. Pictures or other hanging items do not have an attached hanger (wire hangers must be secure and attached to the frame for paintings and drawings only). No wire hooks taped to back. All hangers must support the weight of item. Pictures should be ready for hanging. May include frame or securely attached hanger (canvas).
 - b. Pictures are not mounted on firm mat, not foam core and/or framed with attached hanger. No poster board allowed.
 - c. Seniors do not have an artist statement.
 - d. If subject matter is not “family friendly” in context.
9. Small items, which are easily separated or destroyed, may be placed in small plastic bags. For items with more than one piece, a description on the back of the ID card is suggested with number of pieces, color, description, etc. In addition, label each piece in an inconspicuous location include a minimum of name and county (the clothing label can be utilized [4LO-12SO]).
10. Reserve and Grand Champion will be selected from class champions in both the junior and senior categories.

SECTION A: Portfolio Pathways

Painting

727a. Junior Acrylic Still Life: (pg.12) Using acrylic paint to create a Still Life.

727b. Senior Acrylic Still Life: (pg.12) same as Junior.

728a. Junior Water Color: (pg.14) Using watercolors and a variety of techniques to complete a painting on watercolor paper.

741a. Junior Hand Drawn Negative Photograph: (pg.51) You will draw a negative on frosted acetate, then print onto photographic paper (8"x10" in.) as a positive, using a photographic process.

741b. Senior Hand Drawn Negative Photograph: same as Junior.

Graphic Design

743a. Junior 5 Color Design: (pg.62-63) Create (2) two 8"x 10" in. landscapes. 5 color designs are identical except for (1) one color. Change (1) one color to create a second design. Use paint, paper or computer graphics program. Mount on a matt board.

743b. Senior 5 Color Design: same as Junior

744a. Junior Computer Drawing: (pg.70) Explore the use of computer tools and techniques to doodle, draw and replicate images. Print out each design showing the use of various tools.

744b. Senior Computer Drawing: same as Junior.

Section B: Sketchbook Crossroads

Drawing

745a. Junior Contour Drawing: (pg.12) Draw objects using the contour drawing method. Do 2-3 drawings of the same object from different angles.

745b. Senior Contour Drawing: same as Junior

746a. Junior Two Point Perspective: (pg. 16) On sketch paper, draw a two point perspective that has a point at each end of a horizontal segment.

746b. Senior Two Point Perspective: same as Junior.

747a. Junior Circular Shape Object: (pg.18) Draw a subject to fit a circular shape.

747b. Senior Circular Shape Object: same as Junior.

748a. Junior Color Pencil: (pg.20) Draw with colored pencils and use turpenoid to blend the colors.

748b. Senior Color Pencil: same as Junior.

749a. Junior Pen and Ink: (pg.22) Sketch animals or other objects using pen and ink.

749b. Senior Pen and Ink: same as Junior

750a. Junior Calligraphy: (pg. 24) On 8 ½ by 11 paper, rewrite a quote, poem or pledge using Calligraphy. Make sure to include the author on the piece.

750b. Senior Calligraphy: Same as Junior

751a. Junior Cartooning: (pg.27) Cartooning is a simple process of making line drawings show sequential motion. Create your own cartoon character showing motion. Must create at least three blocks.

751b. Senior Cartooning: same as Junior.

Fiber Arts

752a. Junior Felted Wool Applique Mat: (pg31) Felt wool to create a design. Applique design to a felted wool mat. Max size of mat 18” x 24” in. Use 100% wool to felt.

752b. Senior Felted Wool Applique Mat: same as Junior.

753a. Junior Cotton Linter Bowl: (pg. 34) Experiment with cotton linter using molds and shaping the linter to form bowls. Enhance the cotton with colored pencils, threads, floss, dried flowers to make a unique creation.

753b. Senior Cotton Linter Bowl: same as Junior.

754a. Junior Batik Fabric: (pg.37) Using natural fiber fabric. Create a unique fiber artwork using dyes and the wax resist method.

754b. Senior Batik Fabric: same as Junior.

755a. Junior Lap Loom Woven Place Mat: (pg.40) Set up a lap Loom. Using several colors or types of yarn create a woven placemat.

755b. Senior Lap Loom Woven Place Mat: same as Junior

756a. Junior Inkle Loom Basket: (pg.44) Weave 4-6 stripes that are identical. Sculpt a basket out of several woven strips by stitching them together in a spiral. Manipulate the strips to form the bottom of the basket.

756b. Senior Inkle Loom Basket: same as Junior.

Sculpting

757a. Junior Clay Container: (pg.55) Create a functional container from clay either self-hardening or firing required.

757b. Senior Clay Container: same as Junior.

758a. Junior Clay Bust: (pg.57) Sculpt a head with facial features out of clay.

758b. Senior Clay Bust: same as Junior

759a. Junior Mask: (pg.61) Create a mask using clay emphasizing unique form and texture to portray feelings.

759b. Senior Mask: same as Junior.

760a. Junior Cardboard Sculpture: (pg.65) Create a piece of textured relief sculpture using corrugated cardboard stacked and glued together. Sculpt with an Exacto® knife.

760b. Senior Cardboard Sculpture: same as Junior.

761a. Junior Flower Wire Sculpture: (pg.67) Using wire and nylon cloth create a freestanding flower sculpture.

761b. Senior Flower Wire Sculpture: same as Junior.

762a. Junior Plaster of Paris Carving: (pg.69) Using a plaster of paris block, carve a form that has a concave and convex surface and allows space to flow around and through it.

762b. Senior Plaster of Paris Carving: same as Junior.

Section C: Art Trends and Traditions

This section will be highlighting the latest trends in art while honoring our heritage. Art trends will be selected every two years. Heritage crafts will be open to any heritage craft. Documentation for the Heritage Craft Classes is **REQUIRED**. If required documentation is not attached the item will be disqualified. You may enter one entry per year in this section.

763a. Junior Art Trends – Mixed Media. Mixed media is defined employing more than one medium.

763b. Senior Art Trends—Mixed Media

764a. Junior Heritage Craft- See below for definition.

764b. Senior Heritage Craft.

Heritage Crafts

According to various sources, heritage can refer to practices or characteristics that are passed down through the years, from one generation to the next. Kentucky 4-H believes in celebrating one's heritage through recognition of crafts that may be representative of one's culture examples may be baskets, brooms, etc. To successfully enter Heritage Crafts the 4-H'er must create the Heritage Craft piece after State Fair of the previous year, complete the following description and visibly attach it to the piece.

4-H 22 Christmas Craft

4-H 23 Any Craft not listed

Lot 6030 – 4-H PHOTOGRAPHY

1. See General Rules applying to all 4-H exhibitors and general rules applying to all 4-H exhibits other than livestock listed previously in this catalog.
2. Specification for exhibits:
 - a. All general photography classes are taken from 4-H Photography Core Curriculum (Focus on Photography, Controlling the Image and Mastering Photography).
 - b. Each county may have one (1) entry per class in both general photography and horticulture photography. Only one entry per class per county.
 - c. General photography (levels 1, 2 & 3): 4-H'ers can enter 3 classes in any one level (curriculum) per year.
 - d. Horticulture photography: a 4-H'er may enter any of the classes in addition to general photography.
 - e. All pictures must be made since the last State Fair.
 - f. All classes (*including Horticulture*) WITH ONE PHOTOGRAPH MUST BE MOUNTED ON WHITE 10"x 16" MAT BOARD-available via order entry (no poster board or foam core board accepted). Single photographs are limited to up to a maximum size of 8"x 12". Pictures cannot be framed or matted with colored mat board.
 - g. All classes (*including Horticulture*) WITH MULTIPLE PHOTOGRAPHS (More than 1 photograph) MUST BE MOUNTED ON WHITE 16" x 20" MAT BOARD (no poster board or foam core board accepted). Pictures cannot be framed or matted with colored mat board.
 - h. Each picture must be mounted securely. Rubber cement or dry mounting tissue is recommended. Do not use photo mounting corners.
 - i. If an entry does not fit class descriptions, it will be given a participation award.
3. Photography will be judged on, but not limited to: Technical, impact, composition, creativity, presentation, and the ability of the picture to tell a story.

LEVEL 1 Focus on Photography- Class descriptions in curriculum

764 Fun with Shadows, pg. 22 Photograph shadows to create a mood or element of surprise. Two (2) photographs of shadow shapes and three (3) photographs that show how the shadow of a subject can "grow" or shrink over time.

765 Directing the Light, pg. 26 Four (4) Photographs. Using either natural or artificial light take photographs of subject with; Front lighting, back lighting, Side lighting, and Top lighting (overhead).

766 What Do You See? pg. 34 Display three (3) photographs. (A) 1- Landscape with foreground, Middle ground, and background, labeled 1, 2, 3, (B) 1- Landscape with a foreground object that frames the photograph. (C) 1- portrait of a person without background clutter.

767 Bird's Eye View, pg. 46 Display four (4) photographs, one from each Position. a.) Lying on your stomach, b.) Lying on your back, c.) Leaning over, d.) Bending sideways

768 Hat Tricks and Magic, pg. 50 Display 4 photographs that show the following special effects. Give each photograph a title.

- a. Hat Trick: Have a plant growing out of the subject
- b. Hand Stand: Have it look like someone is holding a person in their hand
- c. Magic: Set up the photograph to look like a person is hanging from the ceiling.
- d. Bad Hair Day: Position a person to look like their hair is sticking straight up.

769 Photos Can Tell a Story, pg. 58 A sequence of 3-5 photographs that tell a story. There should be a beginning, a middle and end.

770 Black and White, pg. 62 3-5 Black and White photographs that show texture, shape and composition. The interest is in the contrast, light and shadows.

LEVEL 2 Controlling the Image-Class description in curriculum

771 Golden Photo, pg. 38 Display 4 photographs, labeled.

- a. 1 photo – Rule of Thirds
- b. 1 photo – Using the Golden Triangle
- c. 1 photo – Using the Golden Rectangle
- d. 1 photo – That doesn't follow the rules.

772 The Space Tells a Story, pg. 46 Display 1 photograph that shows good use of positive and negative space.

773 Capture a Candid Photo, pg. 48 Create a candid collection (3-5) photos. Take photographs at a party, parade, sporting event or family reunion. Try to capture the emotions of the event.

774 Freeze the Moment, pg. 54 Display 2 photographs that use shutter speeds to show action.

- a. setting # 1 – Set shutter speed 1/250 to freeze action for a clear photograph.
- b. setting #2—set the shutter speed at 1/30
Label the shutter speed of the photograph.

775 Panning the Action, pg. 58 Display two (2) photographs; one (1) showing panning technique and one (1) showing blurring of motion.

776 Bits and Pieces, pg. 62 Display one (1) photograph. Fill the frame with small parts of a whole subject. Choose bits and pieces for \ close-ups.

777 Panoramas, pg. 66 Take a series of photographs to create a panorama.

Level 3 Mastering Photography-Class description in curriculum

778 Reflections, pg. 30 Two (2) reflections photographs. Label each with time, location, and camera setting. Take pictures of reflections as subjects.

779 Still-Life, pg. 42 Show two (2) series of at least three (3) photographs showing different arrangements and techniques of a still-life. Choose two (2) Experiments:

- a. Similar Themes
- b. Similar Colors
- c. Different Lighting
- d. Your Interest

780 Say “Cheese”, pg. 46 Display two (2) formal portraits and two (2) informal portraits

- 781** Mastering Composition, pg. 50 Display four (4) photographs. One (1) from each collection.
- Symmetry vs Asymmetry
 - Pattern and Texture
 - Shape and Form
 - Visual Rhythms
- 782** Expression Through Color, pg. 54 Display three (3) photographs that illustrate Monochromatic, Contrasting, and Complementary color techniques- Label each one.
- 783** Details! Details!, pg. 58 Display three (3) to five (5) examples that highlight details in a subject you explored.
- 784** Pictures With a Purpose, pg. 62 Display 2-3 photographs that could be part of a brochure. Include words that market the product, event or the Organization.
- 785** How Did They Get That Picture?, pg. 66 Display 3-5 Photographs taken with advanced or specialized equipment.

HORTICULTURAL PHOTOGRAPHY EXHIBITIONS

Horticulture is the science, art, technology and business concerned with intensively cultivated plants that are used by people for food, for medicinal purposes, and for aesthetic gratification.

Horticulture is divided into two categories:

The cultivation of plants for food (pomology and olericulture):

- Pomology deals with fruit and nut crops. (not included in photography classes)
- Olericulture deals with herbaceous plants for the kitchen, including, for example, carrots (edible root), asparagus (edible stem), lettuce (edible leaf), cauliflower (edible flower), tomatoes (edible fruit), and peas (edible seed). (included in photography classes)

Plants for ornament (floriculture and landscape horticulture).

- Floriculture deals with the production of flowers and ornamental plants; generally, cut flowers, potted plants, and greenery. (included in photography classes)
- Landscape horticulture is a broad category that includes plants for the landscape, including lawn turf, but particularly nursery crops such as shrubs, trees, and climbers. (not included in photography classes)

For the purposes of the Kentucky 4- Horticulture Photography Contest, only photographs representing the areas of Floriculture and Floriculture will be accepted.

NJHA Contest: Entries in the following classes may also participate in the National Junior Horticulture Association Photography Exhibition. It is the responsibility of the individual to submit all required entry forms and follow all rules set out by NJHA organization to participate. States are not limited in the number of entries. See web site for details: www.njha.org

HORTICULTURAL PHOTOGRAPHY CLASSES

- 786** Single black and white. Horticultural subject or activity. (Maximum size: 8" x 12")
- 787** Single color. Horticultural subject or activity. (Maximum size: 8" x 12")
- 788** Sequence of 4 photographs. B&W or Color representing a horticultural event or activity that tells a visual story, chronologically, without the use of words.
- 789** Horticulture collection (B&W or color), consisting of 6 photographs.

LOT 6032 - 4-H SEWING (+)

Label each item. Safety pin 4LO-11SO Identification Cards for State Fair exhibits on the outside of item for public viewing. Hand baste or securely safety pin **4LO-12SO clothing label** on inside of each article **Securely pin the 4-H Sewing Project Card to the entry. All entries MUST be hand made by the 4-H Member.**

Junior Division for 4-H'ers Ages 9-13

Junior members may complete the projects in any order and may repeat a level more than one year. The curriculum includes instructions for making "practice" items; the practice items do not fit in classes in the Clothing Division.

Unit I – Let's Learn to Sew: Beginner skills; See Publication:

<http://www.ca.uky.edu/agc/pubs/4jd/4jd01pb/4jd01pb.pdf> , pages 3-20 and 55-56.

- 789** Unit I Clothing Option: Shorts, pants, or skirt with casing waistline (elastic and/or drawstring). *Garment must be made from woven fabric and include the following: straight machine stitching, appropriate visible seam finish, and machine stitched hem. This class is for ages 9-13.*
- 790** Unit I Non Clothing Option: Drawstring backpack OR tote bag with fabric handles OR a laundry bag. *Item must be made from woven fabric and include the following: straight machine stitching, appropriate visible seam finish, and a casing or machine stitched hem. This class is for ages 9-13.*

Unit II – Let’s Get to the Bottom: Beginner skills; See Publication: <http://www.ca.uky.edu/agc/pubs/4jd/4jd01pb/4jd01pb.pdf> , pages 21-38 and 55-56.

791 Unit II Clothing Option: Skirt, shorts or pants. *Exhibit must be made from woven fabric and include the following: enclosed seams, appropriate seam finish, interfacing, zipper, and a facing or waistband. This class is for youth ages 9-13.*

792 Unit II Non Clothing Option: Zippered tote bag, purse, garment bag, or gym bag. *Exhibit must be made from woven fabric and include the following: enclosed seams, appropriate seam finish, interfacing, and zipper. (Pre-quilted woven fabric and recycled woven fabric are acceptable fabric choices but use is not required.) This class is for youth ages 9-13.*

Unit III – Top It Off: Beginner skills; See Publication: <http://www.ca.uky.edu/agc/pubs/4jd/4jd01pb/4jd01pb.pdf> , pages 39-52 and 55-56.

793 Unit III Clothing Option: Shirt, simple jacket, one piece dress with no waistline, cape with a hood or collar, bathrobe, or vest with lining or facing. *Garment must be made from woven fabric and include the following: buttons and buttonholes. A simple lining, trim, collar, and sleeves may be included but are not required. This class is for youth ages 9-13.*

794 Unit III Non Clothing Option: Backpack with lining, applied trim, and button/buttonhole closure. *This class is for youth ages 9-13.*

Unit IV – Stretch Your Knit Skills: Beginner skills; See Publication: <http://www.ca.uky.edu/agc/pubs/4jd/4jd01pb/4jd01pb.pdf> , pages 45-48 and 55-56.

795 Unit IV Stretch Your Knit Skills: 1 or 2 piece complete outfit made from knit fabric; such as a dress, top and bottom, pajamas, or nightshirt. **All garment pieces must be made from knit fabric with a limited amount of one-way stretch; rib knit may be included for neckband and arm/leg band trim only.** *This class is for youth ages 9-13.*

Unit V – Moving on Up: Intermediate skills; See publication: http://www2.ca.uky.edu/4hguide-files/sewing/Junior_Unit_V_Moving_on_Up.pdf

796 Unit V Moving on Up: one-piece complete outfit made from woven fabric; such as a dress, coveralls, or jumpsuit. Item must include at least a zipper and/or buttons and buttonholes. A waistline simple lining, trim, collar, and sleeves may be included but are not required. This class is for youth ages 9-13.

Unit VI – Put it All Together; See Publication: <http://www.ca.uky.edu/agc/pubs/4jd/4jd01pb/4jd01pb.pdf> , pages 49-56.

797 Unit VI Put It All Together Clothing Option: 2 or 3 piece complete coordinating outfit; such as warm up suit; dress with jacket or coat, swimwear with cover-up, jacket or shirt with slacks/ skirt. *At least one piece must include sleeves and a collar/hood. No simple casings. Fabric choice may be woven, knit or a combination of the two. This class is for ages 9-13.*

798 Unit VI Put It All Together Non Clothing Option: Original design tote bag and documentation folder - Using Wild Ginger Software, Inc. **Wild Things!** Software program, select the Tote Bag option and design a bag that includes at least 2 pockets. Be creative with your design. Required elements: at least 2 pockets; minimum size of 12 inches in height and 12 inches in width. Item must have at least one functional zipper; and creative stitchery or applied trim to personalize your bag. Optional elements: lining, other type closure as design dictates [button(s), hook and loop tape, or snap(s)]. If bag is not lined, it is suggested that the seam allowances be finished with a bound seam finish. This class is for ages 9-13. **In the documentation include:** your name, your county, the name of the unit, class entered, number of years you have been sewing, cost, and the printed design sheets (one for each pocket selected) from the program, and answers to the following questions:

1. How did you choose the size of your tote bag? Did you use any of the default settings in the program?
2. Did you have any trouble using the software or printing your pattern? Explain

3. Did you download the Wild Things! Program to your home computer or use the program at your county extension office?
4. Did you make any changes to your pattern after it was printed? If so, tell what you changed.

Unit: Up Cycle It!—for youth ages 9-13 with advanced sewing skills; See publication: https://4-h.ca.uky.edu/sites/4-h.ca.uky.edu/files/upcycle_project_jr_and_sr.pdf

799 Up Cycle It! Junior—item sewn from recycled/repurposed garments and documentation folder: Sew a garment or fashion accessory from previously worn garments. Recycled fabric is to be the major component of the item. Recycled garments may be cast-offs from the member’s family/friends or purchased at a yard sale or similar low cost source. **Documentation is required.** In documentation include the following: your name, your county, the name of the unit, class entered, number of years you have been sewing; a **“before” photo** of all recycled items used; source of the recycled garment; how the design was created; and any design drawings that were used in the creation. Place documentation in a folder or plastic sheet protector. “Deconstructed” t-shirts which do not include sewing skills do not fit this class. Items for the home do NOT fit this class. Items which do not include sewing as a major means of reconstruction are not eligible for this class. See publication: <http://4-h.ca.uky.edu/node/113>. Click on “Up Cycle. ”This class is for ages 9-13 with sewing skills.

Senior Division for 4-Hers age 14-18

Senior members may complete the projects in any order and may repeat a level more than one year.

Unit: Let’s be Casual- for ages 14-18. (Ask your county 4-H agent for a copy. or see publication: http://4-h.ca.uky.edu/sites/4-h.ca.uky.edu/files/senior_unit_1_a_lets_be_casual.pdf)

800 Let’s Be Casual--Clothing Option: 1 or 2 piece complete outfit made from knit or woven fabric such as a dress, top and bottom, simple pajamas, or robe. This class is for ages 14-18.

801 Let’s be Casual--Non Clothing Option: 2 coordinating fashion accessories from the following: wallet, garment bag, purse, backpack or duffel bag. At least one piece must have a zipper. This class is for ages 14-18.

Unit: Dress it Up- for ages 14-18. (Ask your county 4-H agent for a copy. or see publication: https://4-h.ca.uky.edu/sites/4-h.ca.uky.edu/files/senior_unit_1_b_dress_it_up_0.pdf)

802 Dress It Up 1 or 2 piece complete dressy outfit, such as a dress, suit, pantsuit, sport coat and slacks. Fabric choice may be woven, knit or a combination of the two. This class is for ages 14-18.

Unit: Match it Up- for ages 14-18. (Ask your county 4-H agent for a copy or see publication: https://4-h.ca.uky.edu/sites/4-h.ca.uky.edu/files/senior_unit_1_c_match_it_up.pdf)

803 Match It Up--Clothing Option: Choose at least one item from each group to make a complete 3 or 4 piece coordinated outfit:

- Shorts, pants, or skirt
- Top, blouse, shirt
- Vest, jacket, sweater

At least one piece is required to have regulation set in sleeves. Fabric choice may be woven, knit or a combination of the two. An accessory item may be included as the fourth piece. This class is for ages 14-18.

804 Match It Up--Non Clothing Option: 3 or 4 piece coordinating luggage/travel accessories set. Each piece must have an applied border/trim, pocket and zipper. This class is for ages 14-18.

Unit: Creative Expressions- for ages 14-18. (Ask your county 4-H agent for a copy or see publication: https://4-h.ca.uky.edu/sites/4-h.ca.uky.edu/files/senior_unit_1_d_creative_expressions.pdf)

805 Creative Expression--Clothing Option: Construct a complete outfit for one of the following activities:

- Halloween, theater, or historic costume
- Uniform for medical, cheerleader, dancer, etc.
- Riding apparel

This class is for ages 14-18.

- 806 Creative Expression--Non Clothing Option: Select one of the following and construct a:
- Fabric doll or animal with a wardrobe of two outfits
 - Machine appliquéd specialty flag or decorative banner (minimum size 24 inches x 24 inches)
- This class is for ages 14-18.

Unit: Leisure Time- for ages 14-18 with advanced skills. (Ask your county 4-H agent for a copy or see publication: https://4-h.ca.uky.edu/sites/4-h.ca.uky.edu/files/senior_unit_2_a_leisure_time_1.pdf)

- 807 Leisure Time--Clothing Option: 2 or 3 piece complete outfit. Choose from the following:
- Athletic wear such as leotard, cycling wear, warm-up suit, bathing suit and cover-up, tennis wear
 - Pajamas and robe (must use specialty fabric such as terry cloth, flannel, fleece, nylon tricot)
 - Raincoat and hat or rain suit
- This class is for ages 14-18.

Unit: Formal Affair- for youth ages 14-18 with advanced skills. (Ask your county 4-H agent for a copy or see publication: https://4-h.ca.uky.edu/sites/4-h.ca.uky.edu/files/senior_unit_2_b_formal_affair_2.pdf)

- 808 Formal Affair--1 or 2 piece complete outfit, such as a prom dress, bridesmaid dress, or tuxedo. Fabric choice may be woven, knit or a combination of the two. This class is for ages 14-18.

Unit: Tailor Made- for youth ages 14-18 with advanced skills. (Ask your county 4-H agent for a copy or see publication: https://4-h.ca.uky.edu/sites/4-h.ca.uky.edu/files/senior_unit_2_c_tailormade.pdf)

- 809 Tailor Made of Wool--Suit, jacket, or coat, made from 100% wool or at least 60% wool blend fabric. Traditional or speed tailoring techniques must be used to create structure in the areas of the neck, shoulder, and hemlines. **Do not include non-wool/wool blend coordinates.** This class is for ages 14-18.

Unit: Up Cycle It!—for youth ages 14-18 with advanced sewing skills; See publication: http://www2.ca.uky.edu/4hguide-files/sewing/Senior_Sewing_Upcycle_Project.pdf

- 810 Up Cycle It! Senior—item sewn from recycled/repurposed garments and documentation folder: Sew a garment or fashion accessory from previously worn garments. Recycled fabric is to be the major component of the item. Recycled garments may be cast-offs from the member's family/friends or purchased at a yard sale or similar low cost source. ***Additional documentation is required.*** In documentation include the following: your name, your county, the name of the unit, class entered, number of years you have been sewing; a **“before” photo** of all recycled items used; source of the recycled garment; how the design was created; and any design drawings that were used in the creation. Place documentation in a folder or plastic sheet protector. “Deconstructed” t-shirts which do not include sewing skills do not fit this class. Items for the home do NOT fit this class. Items which do not include sewing as a major means of reconstruction are not eligible for this class. This class is for ages 14-18 with sewing skills.

Lot 6033 - 4-H Needlework

CROCHET Category

- 813 **Item(s) made of medium weight yarn and single and/or double crochet stitches:** Such as: scarf, purse, belt, hat, pillow, two wash cloths (made from cotton yarn), afghan, shawl, vest, or pair of slippers.
- 814 **Item made with novelty yarn and single and/or double crochet stitches:** Such as: scarf, purse, belt, hat, pillow, afghan, shawl, vest, or pair of slippers.
- 815 **Item(s) made of granny squares:** May use any weight yarn.
- 816 **Item(s) made using intermediate skills/pattern crochet stitches:** Such as: toy, hat, belt, scarf, pair of mittens, pillow, sweater, vest, shawl or baby blanket, doily (made from bedspread weight thread) or set of 5 different ornaments (made from bedspread weight thread using intermediate skills/stitches. Include one or more pattern stitches—shell, arch, diamond, bobble, snapdragon, popcorn, cross, puff, cluster, or seed/granite. Can include one or more colors in alternating rows (stripes).

- 817 **Item or pair of items using advanced crochet skills:** include one or more of the following advanced skills: afghan stitch, beadwork, camel crochet, filet crochet, Irish crochet, Cro-knit/hook, Cro-tat, hairpin lace, or broomstick lace; combining pattern stitches with crocheted buttons and/or buttonholes; creating plaids, geometric designs or checks; making novelty crochet articles; or creating your own design. Original designs must include a copy of directions, notes and diagrams used to create the items(s). Suggested items include: multi-colored hat, purse, collar (made with bedspread-weight cotton thread), sweater, jacket, coat or toy.

HAND EMBROIDERY Category

All embroidery projects are to be a "finished" item (for example: the stitchery is framed or made into an item such as a pillow, wall hanging, pot holder, eyeglass holder, etc.) The stitchery can be created on a purchased item, such as a pillowcase, clothing, tote bag, purse, bib, or dishtowel. Items may be made from purchased kits that meet the individual project guidelines.

The sizes mentioned in the classes below (such as 5" X 7") relate to the amount of stitching, not the size of the fabric, frame, or finished item.

- 818 **Item using one type of embroidery stitch** from the following:
- **Redwork:** Embroidery item made with a single color of floss such as "Redwork," using red floss. Must use the stem stitch and have an embroidered area equivalent to 5 x 7 inches or larger.
 - **Stamped Cross Stitch:** Cross stitched design stamped (printed/drawn) on plain woven fabric and have an embroidered area equivalent to 5 x 7 inches or larger.
 - **Stamped Cross Stitch Border:** Cross stitched border using a design stamped (printed/drawn) on plain woven fabric that has an embroidered area equivalent to 2 x 16 inches or larger.
 - **Cross Stitch on Gingham:** Cross stitched item using ¼-inch checked gingham fabric and have an embroidered area equivalent to 5" X 7" or larger. The design was stitched by following a chart or graph of the design, not stamped or drawn on the fabric.
- 819 **Item using multiple types of embroidery stitches** from the following:
- **Candlewicking:** Candlewicking design stamped on plain woven fabric. Must include stem/outline, satin and colonial knot stitches and have an embroidered area equivalent to 5 x 7 inches or larger.
 - **Stamped Embroidery:** Embroidery design printed/drawn on plain woven fabric or felt. Must include three or more of the following different stitches (stem/outline, lazy daisy, running, straight, French knot, satin, blanket, chain, or back stitch). May use more than one color of floss. Must have an embroidered area equivalent to 5 x 7 inches or larger.
- 820 **Item of charted embroidery using large cross or snowflake stitches** from the following:
- **Cross Stitch on Gingham:** Cross stitch on ¼-inch gingham and have an embroidered area equivalent to 5 x 7 inches or larger.
 - **Counted Cross Stitch:** Counted cross stitch on 11 count Aida cloth and have an embroidered area equivalent to 5 x 7 inches or larger.
 - **Chicken Scratch** (on gingham): Chicken Scratch (also known as Snowflake embroidery) on ¼ inch or smaller checked gingham fabric. Must have an embroidered area equivalent to 5 x 7 inches or larger.
- 821 **Item of crewel embroidery:**
Crewel embroidery design on linen or cotton twill fabric using crewel or Persian yarn. Must have an embroidered area equivalent to 6 x 8 inches or larger.
- 822 **Item of charted embroidery using specialty cloth** from the following:
- **Counted cross stitch on 14 count Aida cloth or other fabric using waste canvas.** Must have an embroidered area equivalent to 5 x 7 inches or larger.
 - **Huck embroidery** on huck toweling creating a minimum 2 inch wide border design.
 - **Swedish weaving** on monk's cloth creating a minimum of 6 inch wide border design.
- 823 **Item of embroidery using advanced skills** from the following:
- **Silk ribbon** embroidery using 5 or more embroidery stitches with silk ribbon. Design may also include embroidery floss.
 - **Crazy quilt patchwork** constructed of irregularly shaped fabric pieces embellished with a combination of ribbon work, specialty thread, embroidery stitches, and/or beadwork creating a finished crazy quilt design.
 - **Counted cross stitch on 18 or 22 count even weave or Aida cloth.** Must have an embroidered area equivalent to 5 x 7 inches or larger.

- **English smocking**, minimum smocked area equivalent to 4 x 6 inches. Design must include at least 5 different smocking stitches.

KNITTING Category

The objective is for youth to learn the skills involved in hand knitting with needles. Therefore items made on a knitting loom or knitting machine are NOT to be entered and will not be judged.

- 824 **Small/simple knitted item(s)**: Items such as a hat, pillow, purse, scarf, belt, doll afghan, or two wash cloths using worsted weight yarn. Solid color or variegated yarn is acceptable. Wash cloths should be made from worsted weight cotton yarn. Items are limited to those that include garter stitch, stockinette stitch, and/or ribbing stitch. Items made on a knitting machine or looms do not fit in this class.
- 825 **Knitted Scarf from Novelty Yarn**: Knitted scarf created from any novelty/decorative yarn. Scarf must be at least 24" long. Items made on a knitting machine or looms do not fit in this class.
- 826 **Larger/simple knitted item(s)**: Items such as a hat and scarf; pair of mittens; pair of slippers, shawl; or afghan (minimum size equivalent to 36" x 36"). May use yarn other than worsted weight yarn. Two colors and one pattern stitch may be used in addition to garter stitch, stockinette stitch, and/or ribbing stitch. Items made on a knitting machine or looms do not fit in this class.
- 827 **Knitted project focused on Shape**: Exhibit one item or a pair of items using pick up stitches, multiple color changes (stripes or duplicate stitch), and/or circular knitting. Item must include increase or decrease. May use yarns other than worsted weight yarn. Ideas such as: gloves, hat, mittens, socks, leggings, stuffed toy, skirt, sweater, or vest. Items made on a knitting machine or looms do not fit in this class.
- 828 **Knitted project focused on Design**: Exhibit one item or a pair of items using charted designs or design your own. Chartist designs may include color changes such as Fair Isle Intarsia, and Mosaic knitting. Original designs must include a copy of directions, notes, and any diagrams used to create the item. Ideas such as: pillow, afghan (minimum size 45-x 60-inches), holiday stocking (minimum 18-inches in length), purse, pair of socks, sweater. Items made on a knitting machine or looms do not fit in this class.
- 829 **Knitted project focused on Texture**: Exhibit one item or pair of items using charted designs or design your own. Chartist designs must include multiple pattern stitches such as Aran Isle knitting or lace knitting. Knitting with beads is also acceptable. Original designs must include a copy of directions, notes, and any diagrams used to create the item. Ideas such as: cell phone holder, amulet, pillow, afghan (minimum size 45-x 60-inches), holiday stocking (minimum 18-inches in length), purse, pair of socks, sweater. Items made on a knitting machine or looms do not fit in this class.

LACEWORK – TATTING Category

- 830 **One thread tatting**: Tatted item or item embellished with tatted edging or tatted motifs using a tatting needle or shuttle and single thread. Item should include rings with picots and double stitches only. Item to which the tatting is attached may be purchased, made by member or by someone else. Judging is based on tatting and quality of workmanship in attaching it to the item.
- 831 **Two thread tatting**: Bookmark, jewelry, tatted embellishment on clothing or other item using size 5 needle or shuttle and 2 appropriate sized threads. Item must include chains and rings with picots and double stitches, may use one or two colors of thread. Item to which the tatting is attached may be purchased, made by member or by someone else. Judging is based on tatting and quality of workmanship in attaching it to the item.
- 832 **Advanced Tatting**: Exhibit one of the following items:
- Item of shuttle tatting using size 20 or 30 tatting thread. Options: Bookmark, jewelry, embellishment on clothing or other item. Item must include chains and rings with picots and double stitches, may use one or two colors of thread.
 - Item of needle tatting using size 7 needle and appropriate sized tatting thread. Options: Bookmark, jewelry, embellishment on clothing or other item. Item must include chains and rings with picots and double stitches, may use one or two colors of thread.
 - Item using either shuttle or needle tatting with the use of two threads and beads. Options: jewelry, advanced motif as embellishment on clothing or other item.

Item to which the tatting is attached may be purchased, made by member or by someone else. Judging is based on tatting and quality of workmanship in attaching it to the item.

QUILTING Category

All projects are to be a completed item that includes a pieced top, batting, backing fabric, and a finished outer edge. Quilting on long arm quilting machines or hooped embroidery machines is not an option for the Needlework-Quilting project. Quilting or tacking should be done by hand or with the use of a conventional sewing machine. Refer to 4-H Quilting publications.

833 Quilted Mat (12" x 12" finished size)

Exhibit a 2 x 2 "quilt" made with four six-inch squares. At least two of the 6-inch squares must be patchwork designs in which square and/or rectangle pieces are pieced together (do not include triangle pieces).

Piecing technique: stitch by hand or sewing machine

Quilting technique: machine tack or hand tie, stitch by hand or use a conventional sewing machine (Do NOT use a long arm quilting machine or hooped embroidery machine.)

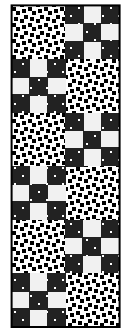


834 Quilted Runner—machine tacked or hand tied (12" x 36" finished size)

Exhibit a 1 x 3 four-block runner "quilt". Each four-block must include at least two 6-inch square patchwork blocks made with square and/or rectangle pieces (do not include triangle pieces).

Piecing technique: stitch by hand or sewing machine

Quilting technique: machine tack or hand tie.



835 Quilted Runner—quilted by hand or sewing machine (12" x 36" finished size)

Exhibit a 1 x 3 four-block runner "quilt". Each four-block must include at least two 6-inch square patchwork blocks made with square and/or rectangle pieces (do not include triangle pieces).

Piecing technique: stitch by hand or sewing machine

Quilting technique: stitch by hand or use a conventional sewing machine (Do NOT use a long arm quilting machine or hooped embroidery machine.)

836 Hand Quilted Wall Hanging or Small Quilt (36" x 36")

Exhibit a 4 or 9 block quilt or quilted wall hanging. Each block must measure 12 inches by 12 inches for the 4-block version or 9 inches by 9 inches for the 9-block version. Finished project must include appliqué and/or triangle pieces with sashing and/or borders. Finished quilt not to exceed 36 inches by 36 inches.

Piecing technique: stitch by hand or sewing machine

Quilting technique: stitch by hand using cross hatching, stitching in the ditch, or echo/outline quilting.

Edge finishing technique: Applied binding with mitered corners, hanging sleeve optional.

837 Machine Quilted Wall Hanging or Small Quilt (36" x 36")

Exhibit a 4 or 9 block quilt or quilted wall hanging. Each block must measure 12 inches by 12 inches for the 4-block version or 9 inches by 9 inches for the 9-block version. Finished project must include appliqué and/or triangle pieces with sashing and/or borders. Finished quilt not to exceed 36 inches by 36 inches.

Piecing technique: stitched by hand or sewing machine

Quilting technique: stitch using a conventional sewing machine using cross hatching, stitching in the ditch, or echo/outline quilting. (Do NOT use a long arm quilting machine or hooped embroidery machine.)

Edge finishing technique: Applied binding with mitered corners, hanging sleeve optional.

838 Creative Quilt or Quilted Wall Hanging (at least 24" x 24" up to 48" x 48")

Exhibit a creative quilt, minimum finished size 24 inches by 24 inches, maximum size 48 inches by 48 inches. Quilt top should include advanced piecing techniques joined by hand and/or machine that may include dimensional pieces, appliqué, foundation piecing, English paper piecing, miniature scale, and/or landscape design.

Piecing technique: stitch by hand or sewing machine

Quilting technique: Stitch by hand or conventional sewing machine using stippling or patterned/stenciled motifs. (Do NOT use a long arm quilting machine or hooped embroidery machine.)

Edge finishing technique: Applied binding with mitered corners, hanging sleeve optional.

LOT 6035 - 4-H FOODS EXHIBITS (+)
(Includes Breads, Dairy and General Foods)
RECIPIES AVAILABLE AT THE EXTENSION OFFICE

Recipes: Entries are to be made using recipes specified in the class description. All recipes can be found in the **2016 4-H Fair Recipe Book** at <http://4-h.ca.uky.edu/content/food-and-nutrition>, in the *4-H Cooking 101-401 Series* or contact your county Extension agent for 4-H YD.

Place the baked product on a disposable plate. Place the plate inside a re-closable zip-type bag to maintain freshness and prevent damage. (Exhibit will not be disqualified if the plate is not inside the bag.)

Use of plastic film or aluminum foil to wrap product is discouraged but will not cause the product to be disqualified.

To prevent damage, wrapped cakes should be transported in a sturdy container such as a cardboard box. *Containers, pie pans, etc. will NOT be returned to the exhibitor.*

All recipes are located in the **2017 4-H Fair Recipe Book** at <http://4-h.ca.uky.edu/content/food-and-nutrition> and also in the publication identified in the class description. (Can also be picked up at the extension office)

Muffins

841 Three **Oatmeal Muffins**: Use recipe in *4-H Cooking 101*, p. 54.

842 Three **Cheese Muffins**: Use recipe in *4-H Cooking 201*, p. 49.

Biscuits

843 Three **Rolled Biscuits**: Use recipe in *4-H Cooking 201*, p. 50.

844 Three **Scones**: raisins may be substituted for dried cranberries. Use the recipe in the **2016 4-H Fair Recipe Book** at <http://4-h.ca.uky.edu/content/food-and-nutrition>.

Quick Breads

845 Three **Cornmeal Muffins**: Use the recipe in the **2017 4-H Fair Recipe Book** at <http://4-h.ca.uky.edu/content/food-and-nutrition>.

846 Three pieces of **Coffee Cake with Topping**: Use recipe in *4-H Cooking 101*, p. 59. Nuts are optional.

Cookies

847 Three **Chewy Granola Bars** (gluten-free): Use recipe in *4-H Cooking 101*, p. 35.

848 Three **Brownies**: Use recipe in *4-H Cooking 101*, p. 67. Nuts are optional.

849 Three **Snickerdoodle**. Use the recipe in the **2017 4-H Fair Recipe Book** at <http://4-h.ca.uky.edu/content/food-and-nutrition>

Cakes

850 Half of one 8" or 9" layer **Rich Chocolate Cake** (no icing): Use recipe in *4-H Cooking 301*, p. 116.

851 Half of one 8" or 9" layer **Carrot or Zucchini Cake** (no icing): Use recipe in *4-H Cooking 301*, p. 119. May use carrots or zucchini.

852 ¼ of a **Basic Chiffon Cake**: Use recipe in *4-H Cooking 401*, p. 118. Do not use variations.

Pies

853 One whole **Double Crust Apple Pie**: Use recipes in *4-H Cooking 401*, p. 105 and 97. Leave pie in the disposable pie pan and place all in a zip-type plastic bag. May use spice variation if desired.

Yeast Breads

854 Three **Cinnamon Twists** (no icing): Use recipe in *4-H Cooking 301*, p. 42 & 44.

855 Three **Soft Pretzels**: Use recipe in *4-H Cooking 301*, p. 48. Use any one topping listed.

856 One loaf **Oatmeal Bread**: Use recipe in *4-H Cooking 401*, p. 25.

Bread Made in a Bread Machine

857 One loaf **Honey Whole Wheat Bread** made in a bread machine: Use the recipe in the **2017 4-H Fair Recipe Book** at <http://4-h.ca.uky.edu/content/food-and-nutrition>. May be a 1-pound or 1 ½ or 2 pound loaf.

Candy

858 Three pieces **Classic Chocolate Fudge**: (Size about one inch square) Use recipe in *4-H Cooking 401*, p. 89. Nuts are optional.

Lot 6036 - 4-H FOOD PRESERVATION EXHIBITS

- Recipes: Entries are to be made using recipes found in the **2016 4-H Fair Recipe Book** at <http://4-h.ca.uky.edu/content/food-and-nutrition> or contact your county Extension agent for 4-H YD.
 - Canned entries must be prepared from raw produce.
 - Re-canning of commercially processed foods is not permitted.
 - Helpful Information for the following classes can be found on the National Center for Home Food Preservation website.
 - Jars not processed by the correct method will not be judged. Open kettle processing is not acceptable for any product.
 - Jars must be clear, clean STANDARD jars specifically designed for home canning. If mayonnaise or similar non-standard jars are used, the product will not be judged or awarded a premium.
 - Two-piece screw bands and lids specifically designed for home canning should be left on containers.
 - Judges will open the jar for judging purposes. Do NOT eat contents of containers upon return.
- 861** Dried Apples: Dry apples according to the instructions in the **2017 4-H Fair Recipe Book** at <http://4-h.ca.uky.edu/content/food-and-nutrition>. Place 12 pieces of dried fruit in a container which is an example of a container suitable for long term storage of dried fruit. Label package with kind of fruit and date processed. Size of the container is not being judged. Publication HE 3-501 may be helpful: <http://www2.ca.uky.edu/agc/pubs/FCS3/FCS3501/FCS3501.pdf>
- 862** Salsa: (pint jar or smaller) canned using a boiling water canner. Use the recipe in the **2017 4-H Fair Recipe Book** at <http://4-h.ca.uky.edu/content/food-and-nutrition>. The USDA recommended headspace for salsa is ½ inch. Canning label must be completed by member and affixed to the jar. Publications Home Canning Salsa (FCS3-581) at <http://www2.ca.uky.edu/agc/pubs/FCS3/FCS3581/FCS3581.pdf>, Home Canning Tomatoes and Tomato Products (FCS3-580) at <http://www2.ca.uky.edu/agc/pubs/FCS3/FCS3580/FCS3580.pdf> and USDA Complete Guide to Home Canning: http://nchfp.uga.edu/publications/publications_usda.html may be helpful.
- 863** Dill Pickles: (pint jar or smaller), canned using a boiling water canner: Use the recipe in the **2017 4-H Fair Recipe Book** at <http://4-h.ca.uky.edu/content/food-and-nutrition>. The USDA recommended headspace for pickles: ½ inch. Canning label must be completed by member and affixed to the jar. Publications Home Canning Pickled and Fermented Foods (FCS3-582) at <http://www2.ca.uky.edu/agc/pubs/FCS3/FCS3582/FCS3582.pdf> and USDA Complete Guide to Home Canning: http://nchfp.uga.edu/publications/publications_usda.html may be helpful
- 864** Strawberry Jam: (half pint or smaller jar), canned using a boiling water canner. Use the recipe in the **2017 4-H Fair Recipe Book** at <http://4-h.ca.uky.edu/content/food-and-nutrition>. The USDA recommended headspace for jam is ¼ inch. Canning label must be completed by member and affixed to the jar. Write the type of fruit used on the canning label. Publications FCS3-579 at <http://www2.ca.uky.edu/agc/pubs/FCS3/FCS3579/FCS3579.pdf> and USDA Complete Guide to Home Canning: http://nchfp.uga.edu/publications/publications_usda.html may be helpful. Refrigerator and freezer jams are not appropriate for this class.
- 865** Green Beans: (One pint), canned using a pressure canner. Use the recipe in the **2017 4-H Fair Recipe Book** at <http://4-h.ca.uky.edu/content/food-and-nutrition>. Beans may be ‘raw packed’ or ‘hot packed’ but the packing method used must be indicated on the label. The USDA recommended headspace for green beans is 1 inch. Canning label must be completed by member and affixed to the jar. Publication FCS3-583 Home Canning Vegetables (<http://www2.ca.uky.edu/agc/pubs/FCS3/FCS3583/FCS3583.pdf>) and USDA Complete Guide to Home Canning: http://nchfp.uga.edu/publications/publications_usda.html may be helpful.

LOT 6039 - 4-H HOME ENVIRONMENT (+)

All entries must be accompanied by an information card from the Extension Office. Card must include description of how/where items are used in the home. **Exhibitor may enter in ONE UNIT and ONE CLASS**

Unit I EXHIBITS from Exploring Your Home project book

- 887** **Color Collage** - (pp. 7-8, activity 3.) A collage of color created by the member to depict colors liked by the member. A collage is made up of a collection of objects (such as paper, fabric, wrapping paper, wallpaper, carpet, or other materials) artistically arranged and adhered to a mat board or foam core board.

- 888 **Texture Collage** - (pp. 8-9, see activities 1 & 2) A collection of textured items or rubbings of textured items artistically arranged and adhered to mat board or foam core board.
- 889 **Transparent finish applied to small wood object.** (pp. 13-14) Apply a clear finish such as tung oil, penetrating seal or polyurethane which does not include stain to a small wood object such as a bowl, tray, cutting board, board game or box. A transparent finish allows the wood grain to show through. Judging emphasis will be on how well the object is prepared for the finish and how well the finish has been applied, not the construction of the wood object. The wood object may be made by the member, made by someone else, purchased or found. Items that are stained or finished with paint do not fit in this class.
- 890 **Simple cloth item for the home** (Sewing machine may be used but is not required) Examples: decorative pillow, tablecloth, laundry bag, place mats; footstool with a seat made of woven fabric; fabric applied to an item such as a box, plate, or lampshade. Unacceptable: purses, tote bags, backpacks, duffle bags.
- 891 **Wastebasket** – (pp. 10-12) decorated by member
- 892 **Bulletin board** (must be ready to hang with appropriate hardware attached)

Unit II EXHIBITS from *Living with Others* project book

- 893 **Decorative item for the home and photo**—decorative item created by the member as part of a 4-H Home Environment Project. Include a photo showing how the item fits into the home's décor.
- 894 **Simple wood item refinished** by the 4-H member (pp. 14-15) - Item should have straight lines with no elaborate carvings or turnings. (The idea is to learn how to apply a new finish such as paint, stain, varnish, polyurethane, etc. to a simple wooden furnishing that's already in use.) Documentation is to include a "before" photo with explanation of how the item was refinished must be securely attached. Examples: refinished footstool, children's furniture, small box, tray, picture frame, bookshelves, and plant stand.
- 895 **Cloth item for the home created using a sewing machine** (Unit II, p. 12-14) – Examples: hemmed tablecloth or table runner, wall hanging, pillow, pillow case, throw, embellished towels, shower curtain, chair cover, laundry bag, pet bed, valence, and curtains. Unacceptable: purses, tote bags, backpacks, duffle bags.
- 896 **Invitation and thank you letter/note**—Design an invitation and thank you letter/note for a sleepover, birthday party or other occasion of your choice. (p. 6-7) Cards/letters may be created with computer software or handwritten. Decorations on the cards/letters may be member's original artwork, computer-generated art, purchased or found decorative items. The message written in the card or letter is more important than the decorations. Write your name and county on the back of each card/letter and place each card/letter in a plastic sheet protector. (For the fair, it is best to use a fictitious address and contact information on the invitation or thank you.)

Unit III EXHIBITS from *Where I Live* project book.

- 897 **Accessory for the home created by the 4-H member** - This exhibit is to be made up of two parts: 1) the accessory and 2) a sheet or folder of documentation. Documentation is to include: a sketch or photo to show how the accessory is used in the home and a description of how the design and colors fit in with the other furnishings and color used in the home. Examples: stitchery or appliqué wall hanging, latch hook items, pillow with applied design (stitchery, appliqué or other media), rug, picture in appropriate frame and ready to hang.
- 898 **Individual place (table) setting:** This exhibit is to be made up of two parts: 1) one individual place setting appropriate to a theme or event chosen by the 4-H member and 2) a color photo or diagram of the place setting showing how it should be arranged. (pp. 11-13) Include plate, beverage container(s), placemat, and napkin. Additional decorative item(s) are optional. All items that make up the place setting are to fit on the surface of the placemat. Flatware (knife, fork and spoon) **must** be included in the photo/diagram showing how all the items are arranged, but do NOT send flatware to the state fair. To insure that all pieces get returned to the member, write the name and county of the exhibitor on tape and place it on every part of the table setting in a location hidden to the public when exhibited at the fair.
- 899 **Piece of furniture refinished** (stripped, sanded, and painted or stained/sealed) by the 4-H member (pp. 16-20) -

This exhibit is to be made up of two parts: 1) the furniture and 2) Documentation is to include a “before” photo with explanation of how the item was refinished must be securely attached. Examples: rocker, table, chair or chest.

- 900 Old or discarded item made useful in a new way as a home accessory** (p. 20) - This exhibit is to be made up of two parts: 1) the accessory and 2) a sheet or folder of documentation. Documentation is to include a “before” photo; an explanation of how the item was made useful again in a new way; materials used, cost and time involved in project. Examples: old silverware flattened and made into wind chimes; scrap wood pieces made into wall art; old lace doily attached to a pillow or framed; old tool box cleaned up and made into a TV stand.

Unit IV EXHIBITS from *In My Home* project book

- 901 An accessory for the home, made with member’s original or adapted design** – This exhibit is to be made up of two parts: 1) the accessory and 2) a sheet or folder of documentation. Documentation is to include an explanation of how the item was created/adapted and a description of how and where item is used in the home. Examples: latch hooked rug or wall hanging; pillow with stitchery design; wall hanging of natural dyed yarns, or drawing with mat and finished or refinished frame.
- 902 Heritage item refinished, restored, or made by the 4-H member** - This exhibit is to be made up of two parts: 1) the item and 2) a sheet or folder of documentation. Documentation is to include information on the history or meaning of the item to the member, how the item was refinished, restored, or made by the member, and how it is used in the home. Examples include antique or collectible furniture, memory box, scrapbook that reflects family history/home/house/farm/land of several generations), quilt with heritage design, wall hanging showing family tree.
- 903 Purchased article selected by 4-H member to solve a home decorating problem** – This exhibit is to be made up of two parts: 1) the purchased article and 2) a folder of documentation. Documentation is to include a description of the problem to be solved, alternatives considered in the solution of the problem, how the plan was carried out, resources used (time, money) and member's evaluation of the results (satisfaction with purchased article, how article is used in the home), and photos illustrating the before and after effect. Examples include wall decoration, lamp, vase, storage item, desk accessories, bedspread, rug, table linens, pillow, and draperies.
- 904 A cloth article made by the 4-H'er showing a major home improvement** – This exhibit is to be made up of two parts: 1) the cloth article and 2) a folder of documentation. Documentation is to include a written description, “before” and “after” pictures /showing how cloth article is used in home, other colors used in room, time and costs involved, and care required. Examples: bedspread, quilt, window treatment and boxed bench pad. **Unacceptable: purses, tote bags, backpacks, duffle bags.**

Unit Advanced: Self-Directed Project--the intent of the following classes is to give members an opportunity to put everything they have learned in Units I-IV of the home environment projects into practice.

- 905 Furniture Experience**—Furniture which has been refinished, reupholstered, recovered, recycled, reused or remodeled - Exhibit is to be made up of two pieces: 1) the piece of furniture and 2) a folder describing the original condition of the furniture (include a picture if possible), work required in completing project, time and cost involved, and how item is used in the home. **DO NOT INCLUDE NEWLY CONSTRUCTED FURNITURE.**
- 906 Design Experience** - Create a plan for or actually complete a design experience. The exhibit is to be made up of two pieces: 1) a home furnishing item which is representative of the design experience (item may be made by the member or purchased) and 2) a folder or notebook describing the plan. Examples of project ideas: a plan for redecorating a room; creation of an accessory item using an original design of 4-H member; notebook with pictures and descriptions of architectural styles used in Kentucky homes.
- 907 Heritage Experience** - Complete a heritage project. The exhibit is to be made up of two pieces: 1) an item representative of the heritage experience and 2) a folder or notebook describing the overall experience, the significance of the project to your family. Examples of project ideas: Restoration of a family heirloom (could include caning, reseating, etc.) including who it belonged to and the significance to the family; study of furniture styles including pictures and history; study of old buildings in the community including photos and descriptions of the architectural significance, period of history, uses of the buildings; create an item after learning a heritage or craft skill...especially from an older family member or friend and describe how skill was learned, how interest was stimulated and how you will use item and skill.
- 908 Major Home Improvement Experience** - Complete a major home improvement project. The exhibit is to be

made up of a notebook which describes the project, tell whether project was an individual project or a group or family project, describe the do-it-yourself skills learned time and cost involved. Include before, during, and after photographs, if possible. Examples: improve storage areas in the house or garage; paint the house; wallpaper and decorate a room; remodel the basement.

CHANGING SPACES:

- 909 Room Floor Plan.** This exhibit is to be made up of two parts: 1) a mounted printout of a room and 2) folder of the documentation described below. Use the Better Homes and Gardens web site www.bhg.com/decorating/arrange-a-room/ or similar software to draw a room (scale: 1 square = 1 foot). Include a door(s), window(s), and furniture. Print in color or black and white (Minimum size 8 ½ x 11 inches. Maximum size 11 x 17 inches). Mount the printout on mat board or foam core board. Documentation should include answers to these questions: 1. Is the room you have drawn similar to a room in your house? What are its dimensions? How many square feet are in the room? 2. Did you have problems with the web site or software? If so, how did you solve them? 3. Tell about how you worked with the items in your room such as walls, windows, doors and furniture.
- 910 House Floor Plan.** This exhibit is to be made up of two parts: 1) mounted printout of house plan and 2) folder of the documentation described below. Use any software program to draw a house plan. Include bedroom(s), bath(s), living space, kitchen, door(s) and window(s). Including a garage is optional. Print in color or black and white (Minimum size 8 ½ x 11 inches. Maximum size 11 x 17 inches.). Mount the printout on mat board or foam core board. Documentation should include answers to these questions: 1. Does your floor plan resemble the house you live in? If not, did you look at other floor plans for inspiration? What type of roof does your house have? 2. Did you consider how a family member who is disabled (for instance, a wheelchair user) might get around in your home? 3. Describe any problems you had with the software and how you solved them. Tell how you worked with additional items required to create a floor plan.
- 911 Presentation Board – Color Scheme for One Room:** This exhibit is to be made up of two parts: 1) a presentation board as described below and 2) a folder of the documentation described below. Create a presentation board which illustrates a **color scheme** for any room in the home. On mat board or foam board, mount color pictures or actual swatches of fabric, wall covering, paint, and flooring, (Color pictures may be downloaded and printed or cut from magazines to represent these items. The mounting board should be 15” or 16” X 20” inches. In the folder, describe the person who lives in the room and the decisions required in selecting the color scheme
- 912 Presentation Board – Floor Plan & Color Scheme for Bedroom:** This exhibit is to be made up of two parts: 1) a presentation board as described below and 2) a folder of the documentation described below. Create a presentation board which includes a **floor plan** (with placement of furniture) **and color scheme** for a bedroom. Use the Better Homes and Gardens web site www.bhg.com/decorating/arrange-a-room/ or similar software to draw the bedroom (scale: 1 square = 1 foot). Include a door(s), window(s), and furniture. Print in color or black and white. On mat or foam board, mount the floor plan and color pictures or actual swatches of fabric, wall covering, paint, and flooring. (Color pictures may be downloaded and printed or cut from magazines to represent these items.) The mounting board should be 15” or 16” X 20.” In the folder, describe the person who lives in the room and the decisions required in selecting the color scheme, flooring, wall, and window treatments; describe the furniture and how the furniture was arranged to accommodate traffic flow; describe the floor, wall, and window treatments selected, etc.; and describe what you like most about the room.
- 913 Presentation Board – Floor Plan & Color Scheme for Great Room or Family Room:** This exhibit is to be made up of two parts: 1) a presentation board as described below and 2) a folder of the documentation described below. Create a presentation board which includes a **room floor plan** (with placement of furniture) **and color scheme** for a great room/family room. Use the Better Homes and Gardens web site www.bhg.com/decorating/arrange-a-room/ or similar software to draw the room (scale: 1 square = 1 foot). Include a door(s), window(s), and furniture. Print in color or black and white. On mat or foam board, mount the floor plan and color pictures or actual swatches of fabric, wall covering, paint, and flooring. (Color pictures may be downloaded and printed or cut from magazines to represent these items.) The mounting board should be 15” or 16” X 20.” In the folder, describe the family who uses the room and the decisions required in selecting the color scheme, flooring, wall, and window treatments; describe the furniture and how the furniture was arranged to accommodate traffic flow; describe the floor, wall, and window treatments selected, etc.; and describe what you like most about the room.

Lot 6040 - CONSUMER AND FINANCIAL EDUCATION (+)

There are 7 classes in the Consumer and Financial Ed Division (Classes 914--920). A member may enter only one class in the Consumer and Financial Education Division. Attach 4LO-11SO Identification Card securely to the front of the poster, in the bottom right corner. Create poster on 20" X 30" foam core board or sturdy cardboard. The use of pencil on the front of the poster is discouraged. Posters will not be considered for class champion if they do not include the narrative or do not conform to the topics specified in the class description. Information for the following classes can be found in the 4-H Consumer Savvy project manuals—The Consumer in Me, Consumer Wise, and Consumer Roadmap.

Level 1 (Grades 4-5): The Consumer in Me

- 914 Poster on “Bargain Shopping”** –For grades 4-5; complete a cost comparison chart for one product you and your family use as outlined in the activities under “Bargain Shopping” on pp. 20-21. Use 20" X 30" foam core board or cardboard. Write a narrative telling how the decision making process was used to reach your final choice; include answers to the questions in “Check This Out!” on p. 21. At the end of the narrative, list the sources of information used in researching the topic. Make a poster on “comparison shopping.” Include name, age, and county at top of narrative. The narrative can be handwritten or a computer printout; single or double spaced; on plain white or notebook paper--one to two pages, printed on, front side only. Place 2 copies of the narrative in 1 plastic sleeve. Attach the sleeve to the back of the poster with tape.
- 915 Poster on “What is the Best Buy?”** – For grades 4-5; complete a cost comparison chart for two products in three different sizes as outlined in the activities on pp. 22-23. Use 20" X 30" foam core board or cardboard. Write a narrative telling how the decision making process was used to reach your final choice; include answers to the question in “Check This Out!” on p. 23. At the end of the narrative, list the sources of information used in researching the topic. Make a poster on “checking prices”. Include name, age, and county at top of narrative. The narrative can be handwritten or a computer printout; single or double spaced; on plain white or notebook paper--one to two pages, printed on page, front side only. Place 2 copies of the narrative in 1 plastic sleeve. Attach the sleeve to the back of the poster with tape.-

Level 2 (Grades 6-8): Consumer Wise

- 916 Poster on “Media and the Marketplace”** –For grades 6-8; complete a commercial comparison as outlined in the activities on pp. 18-19. Use 20" X 30" foam core board or cardboard. Write a narrative of your answers to the questions in “Check This Out!” on p. 19 and tell what conclusions you were able to draw from the experience. At the end of the narrative, list the sources of information you used in researching your topic. Make a poster related to “advertising aimed at young people”—Include name, age, and county at top of narrative. The narrative can be handwritten or a computer printout; single or double spaced; on plain white or notebook paper--one to two pages, printed on, front side only. Place 2 copies of the narrative in 1 plastic sleeve. Attach the sleeve to the back of the poster with tape.
- 917 Poster on “Decision! Decisions! Decide!”** –For grades 6-8; complete the 6-Step Decision Making process on any item you wish to purchase as outlined in the activities on pp. 12-13. Use 20" X 30" foam core board or cardboard. Write a narrative of your answers to the questions in “Check This Out!” on p. 13 and tell what conclusions you were able to draw from the experience. At the end of the narrative, list the sources of information you used in researching your topic. Make a poster related to “the consumer decision-making process”. Include name, age, and county at top of narrative. The narrative can be handwritten or a computer printout; single or double spaced; on plain white or notebook paper--one to two pages, printed on front side only. Place 2 copies of the narrative in 1 plastic sleeve. Attach the sleeve to the back of the poster with tape.

Level 3 (Grades 9-12): Consumer Roadmap

- 918 Poster on “How to Write a Wrong”** –For grades 9-12; write a complaint letter as outlined in the activities on pp 22-23. Use 20" X 30" foam core board or cardboard. Write a narrative of your answers to the questions in “Check This Out!” on p. 23 and tell what conclusions you were able to draw from the experience. At the end of the narrative, list the sources of information you used in researching your topic. Make a poster related to “resolving a consumer complaint”. Include name, age, and county at top of narrative. The narrative can be handwritten or a computer printout; single or double spaced; on plain white or notebook paper--one to two pages, printed on front side only. Place 2 copies of the narrative in 1 plastic sleeve. Attach the sleeve to the back of the poster with tape.
- 919 Poster on “I Own a Car or Does It Own Me?”** –For grades 9-12; calculate and illustrate the costs of owning a car as outlined in the activities on pp. 28-31. Use 20" X 30" foam core board or cardboard. Write a narrative of

your answers to the questions in “Check This Out!” on pp. 29-30 and tell what conclusions you were able to draw from the experience. At the end of the narrative, list the sources of information you used in researching your topic. Make a poster related to “consumer decision-making in buying a car.” Include name, age, and county at top of narrative. The narrative can be handwritten or a computer printout; single or double spaced; on plain white or notebook paper--one to two pages, printed on, front side only. Place 2 copies of the narrative in 1 plastic sleeve. Attach the sleeve to the back of the poster with tape.

- 920** **Poster on “What Does Real Life Cost?”** –For grades 9-12; identify and illustrate the true costs of living on your own as outlined in the activities on pp. 32-33. Use 20” X 30” foam core board or cardboard. Write a narrative of your answers to the questions in “Check This Out!” on p. 33 and tell what conclusions you were able to draw from the experience. At the end of the narrative, list the sources of information you used in researching your topic. Make a poster related to “the financial responsibilities of living on your own. Include name, age, and county at top of narrative. The narrative can be handwritten or a computer printout; single or double spaced; on plain white or notebook paper--one to two pages, printed on, front side only. Place 2 copies of the narrative in 1 plastic sleeve. Attach the sleeve to the back of the poster with tape.

DIVISION 6041 – 4-H LEADERSHIP & COMMUNICATIONS PROJECT

- a. Any project or activity from the Leadership (4-H Step Up to Leadership and Unlock Your Leadership Potential) and/or Communications project books.
- b. Only pages relevant to project are needed. Additional pages are allowed but will not be considered by the judges.
- c. The 4-H ID card (4LO-11SO) should be securely attached to the outside lower right corner of the outside cover. Inside, clearly indicate the pages that are to be judged. If the pages to be judged are not clearly marked then the last 2-4 pages of the book will be reviewed.
- d. **THIS IS NOT A GENERAL SCRAPBOOKING CATEGORY.** (For scrapbooking, see 6029, class 745/746) The scrapbook format is a method of recording the Leadership and/or Communications experiences of youth who participate in these project areas. State Fair projects that do not demonstrate a clearly stated correspondence to a Leadership or Communications activity will not be considered for judging or will receive a white ribbon.
- e. Exhibit must be in an 8 ½” x 11” or 12” x 12” notebook or scrapbook format. Format will allow a Leadership or Communication Portfolio to be developed and kept over multiple years.
- f. Photos should clearly address the theme or activity corresponding to the selected leadership project or communication project. Each photo should be explained with a 2-3 sentence journaling caption. One or two paragraphs of narrative explaining the project or activity should be included on the scrapbook pages. Clearly indicate pages to be judged. Additional pages beyond those required by the project will not be reviewed.

The Leadership and/or Communications Project should contain the following:

- 2 or more photos on each page;
- Each photo should be explained with captions (see #9);
- 1-2 paragraphs of narrative (see #9) on one of the pages;
- No additional pages of narrative are needed

DIVISION 6041-A 4-H COMMUNICATION PROJECT:

- 925** Junior Division: Communication Scrapbook Display – two (2) page display of work completed by junior level member based on an activity, program or project from the 4-H Communications Curriculum.
- 926.** Senior Division: Communication Scrapbook Display – four (4) page display of work completed by senior level member, based on an activity, program or project from the 4-H Communications Curriculum.
- 927.** Senior Division: Resume – one page resume using Microsoft Word. See 4-H Communications project book “The Perfect Fit” and “Take Me As I Am” for resume tips and guidelines.

DIVISION 6041-B 4-H LEADERSHIP PROJECT

928. Junior Level 2 pages based on an activity, program or project from the 4-H Leadership Curriculum.

929. Senior Level 4 pages based on an activity, program or project from the 4-H Leadership Curriculum.

DIVISION 6041-C Secretary Scrapbook (Ribbon Only, No Premium)

930 4-H Club Scrapbook – Using pictures and captions tell about your 4-H Clubs year focusing on leadership, communications and community service activities. (No limit on page numbers)

RECORD BOOKS

4H-24 Junior Record Books

4H-25 Senior Record Books

4H-26 4-H Club Secretary Book

4H-27 4-H Club Reporter Notebook

DIVISION 6042- KENTUCKY 4-H TRENDS AND TRADITIONS

Clover Photography

1. Exhibit is limited to a single photograph.
2. Subject of photograph must include 4-leaf clover. (Photographs of 3-leaf clovers will NOT be accepted.)
3. 4-leaf clover may be real or created.
4. Photograph may be color or black and white.
5. Follow all mounting rules described in the Cloverville Photography division.
6. Maximum photograph size 8" X 12".
7. The 4-H identification tag should be located in the bottom right hand corner.

1010 Junior Clover Photograph

1011 Senior Clover Photograph

Recording History

1. Judging criteria will be based on implementation of the 4-H theme, 4-H historical content, poster design (lettering, attractiveness, how well it conveys the message), as well as the effectiveness of the poster to promote 4-H.
2. Exhibit must be completed on a standard full size foam core board.
3. Posters may not include items or embellishments that make the poster 3-dimensional.
4. Any use of the 4-H Clover must adhere to the standards and guidelines of the registered 4-H clover.
5. Any color foam core board is acceptable.

1040 Junior Historical 4-H Poster

1041 Senior Historical 4-H Poster

Upcycling Project

Upcycling is taking something that you are throwing away and making it into something that maintains or improves the quality of the materials. Examples: There are coin purses made from sweaters, earrings cut out of vinyl records and an old travel case made into a clock. The designs will be judged on quality, use, and creativity. Limited to one entry per county.

1050 Junior Upcycling Project

1051 Senior Upcycling Project

Cake Decorating

1. Entry consists of a decorated (Styrofoam) cake.
2. Styrofoam MUST be the base for the decorating. Real cakes will NOT be accepted.
3. Judging is based on decoration only not taste.
4. Exhibit is not limited to a color or design.
5. Refrigeration will NOT be provided.

6. Exhibit must be limited in size to no taller than 24" and no more than ½ sheet board.
7. Cakes may be returned based on the condition at the end of the fair.
8. 4-H identification cards must be attached to bottom right hand corner of sheet board.

- 1060 Junior 4-H Cake Decorating (Cake must include the 4-H Clover either in design or decoration)
1061 Senior 4-H Cake Decorating (Cake must include the 4-H Clover either in design or decoration)
1062 Junior General Cake Decorating
1063 Senior General Cake Decorating

Cup Cakes

1. Entry consists of a decorated (Styrofoam) cake.
2. Styrofoam MUST be the base for the decorating. Real cakes will NOT be accepted.
3. Judging is based on decoration only not taste.
4. Exhibit is not limited to a color or design.
5. Refrigeration will NOT be provided.
6. Exhibit must be limited to two cupcakes.
7. Cakes may be returned based on condition at the end of the fair.
8. 4-H identification cards must be attached to bottom right hand corner of sheet board.

- 1070 Junior 4-H Cup Cake Decorating
1071 Senior 4-H Cup Cake Decorating
1072 Junior General 4-H Cup Cake Decorating
1073 Senior General Cup Cake Decorating